



BDHA / BDCB

Chilled Water Air Handling Units

BDHA/BDCB Model
2,000-8,000 CFM
50 Hz





Features and Benefits

The Flexible, Low Cost Way to Air Condition with Chilled Water

The Trane chilled water blower coils offer the low cost method of air conditioning your building while allowing flexible applications. They are designed to be ideally suited for "fast track" projects-those requiring quick air conditioning.

LOW INSTALLATION COST

Uncomplicated units contain the necessary accessories to install for any application. This includes : filter(s), motor and drive, duct collars, drain pan and insulation.

Specifically designed to be uncomplicated while offering quality air handling. High efficiency fans and efficient cooling coil are used for optimum performance.

Inexpensive to install. The units factory ship with the necessary accessories for operation.

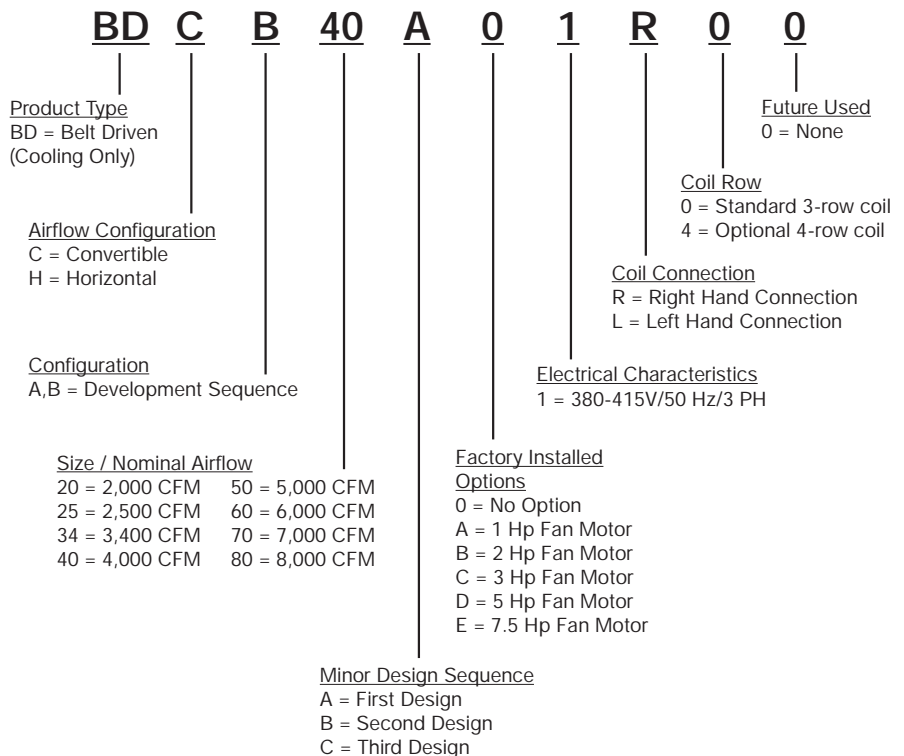
FLEXIBLE

Wide performance range availability. Additional coil options also increase application flexibility.

Compact size allows the air handlers to fit in virtually any space. Mounting versatility allows unit to be floor mounted or ceiling mounted to better utilize valuable floor space.

The small, uncomplicated units can be relocated within the building as needs change with a minimum effort.

Model Nomenclature



General Data

Product Specification

MODEL		BDHA20	BDHA25	BDHA34	BDCB40	BDCB50	BDCB60	BDCB70	BDCB80
Rated - Volts/Ph/Hz		380-415/3/50	380-415/3/50	380-415/3/50	380-415/3/50	380-415/3/50	380-415/3/50	380-415/3/50	380-415/3/50
MCA ¹		1.8	2.5	4.6	4.6	6.4	6.4	10.0	10.0
SYSTEM DATA									
Nominal Airflow	CFM	2,000	2,500	3,400	4,000	5,000	6,000	7,000	8,000
Nominal Capacity	MBH	60	75	100	120	160	180	210	240
Water Inlet Connection Size	in	1 1/4	1 1/4	1 1/4	1 1/2	2	2	2	2
Water Outlet Connection Size	in	1 1/4	1 1/4	1 1/4	1 1/2	2	2	2	2
Water Connection Type		Steel Pipe - MPT							
INDOOR COIL									
Face Area	sq ft	4.22	4.67	6.67	9.60	12.70	14.00	16.00	16.40
Tube Size	in	3/8	3/8	3/8	3/8	3/8	3/8	3/8	3/8
Tube Type									
Fin Type		Slit Coated	Slit Coated	Slit Coated	Slit Coated	Slit Coated	Slit Coated	Slit Coated	Slit Coated
Fins per inch*		Plain for each column							
3-Row coil		14	14	14	14	14	14	14	14
4-Row coil		12	13	14	13	13	12	14	14
Drain Connection Size	in	1	1	1	1	1	1	1	1
FAN									
Fan Type		Double Inlet Centrifugal Forward Curved Wheel							
Dai. x Width		10 x 10	10 x 10	10 x 8	15 x 15	18 x 18	18 x 18	15 x 15	15 x 15
No. used		1	1	2	1	1	1	2	2
Drive Type		Belt - Adjustable Drive							
FAN MOTOR									
No. of Motor		1	1	1	1	1	1	1	1
Motor Power	W	550	750	1,500	1,500	1,500	2,200	2,200	3,700
	hp	0.75	1	2	2	2	3	3	5
No. of Speed		1	1	1	1	1	1	1	1
V/ph/Hz		380-415/3/50	380-415/3/50	380-415/3/50	380-415/3/50	380-415/3/50	380-415/3/50	380-415/3/50	380-415/3/50
RLA/LRA		1.40/5.20	1.99/11.00	3.66/21.00	3.66/21.00	3.66/21.00	5.08/34.00	5.08/34.00	8.03/63.00
RETURN AIR PLENUM									
Filter Type		Washable Aluminium Air Filter							
No. used		2	2	3	4	4	4	4	4
Filter Size (W x L x D)	mm	440x520x25	440x600x25	440x520x25	355x635x25	927x400x25	927x400x25	555x727x25	555x727x25
DIMENSION (HxWxD)									
Crated (Shipping)	mm	673x1,410x970	673x1,410x970	673x1,778x970	1,651x1,499x724	1,867x1,702x939	1,867x1,702x939	1,867x2,299x794	1,867x2,299x794
Uncrated (Net)	mm	520x1,312x841	520x1,312x841	520x1,680x841	1,523x1,410x635	1,751x1,613x850	1,751x1,613x850	1,751x2,210x702	1,751x2,210x702
WEIGHT									
Uncrated (Net)	kg	90	92	139	154	275	285	355	361

¹MCA - Minimum Circuit Ampacity

*Note : 1. 3-Row coil is standard coil
2. 4-Row coil is optional coil



Performance Data Cooling Capacities Model BDHA/BDCB

TC = Total Capacity, MBH
 SC = Sensible Capacity, MBH
 GPM = Water Flow Rate, gpm
 PD = Water Pressure Drop, Ft of Water

Table 2 - Cooling Capacity for 3-Row Coil

Entering Water Temp (EWT) 40 F

Rated Airflow	WTR	Entering Air Temp - EDB/EWB (F)															
		72/61				74/63				80/67				84/71			
		TC	SC	GPM	PD	TC	SC	GPM	PD	TC	SC	GPM	PD	TC	SC	GPM	PD
BDHA20																	
2000	8	57.16	42.51	14.23	8.21	66.59	45.55	16.58	10.71	86.70	55.20	21.59	16.98	108.70	61.09	27.06	25.23
	10	51.09	39.84	10.18	4.56	60.02	42.68	11.95	6.03	80.18	52.41	15.97	9.98	102.10	58.31	20.35	15.23
	12	44.55	37.06	7.40	2.61	53.17	39.80	8.83	3.54	73.21	49.52	12.15	6.17	95.30	55.51	15.82	9.76
	15	33.09	32.40	4.40	1.05	41.51	35.11	5.51	1.55	62.31	45.16	8.28	3.14	84.16	51.13	11.18	5.29
BDHA25																	
2500	8	69.39	52.00	17.27	12.73	80.71	55.66	20.09	16.57	104.80	67.35	26.09	26.18	131.10	74.38	32.65	38.80
	10	62.65	49.04	12.48	7.18	73.10	52.35	14.56	9.40	97.19	64.07	19.36	15.44	123.50	71.15	24.60	23.48
	12	55.79	46.09	9.26	4.26	65.77	49.23	10.92	5.66	89.15	60.71	14.80	9.61	115.50	67.87	19.17	15.11
	15	44.54	41.42	5.92	1.94	53.91	44.38	7.16	2.70	77.40	55.99	10.28	5.06	102.70	62.79	13.65	8.28
BDHA34																	
3400	8	93.94	71.64	23.39	12.85	108.00	76.77	27.10	16.61	140.00	93.22	34.85	25.79	173.80	103.29	43.27	37.70
	10	84.83	67.55	16.90	7.25	98.71	72.23	19.66	9.44	130.00	88.72	25.88	15.25	163.80	98.87	32.63	22.87
	12	75.15	63.30	12.47	4.26	88.61	67.84	14.71	5.67	119.30	84.11	19.81	9.51	153.40	94.33	25.46	14.74
	15	58.13	56.15	7.72	1.84	71.38	60.61	9.48	2.63	103.30	77.40	13.72	4.98	136.70	87.32	18.15	8.11
BDCB40																	
4000	8	114.60	86.89	28.52	12.71	132.40	93.01	32.96	16.36	169.20	112.71	42.25	25.26	210.20	124.73	52.32	36.75
	10	104.10	82.16	20.73	7.26	120.80	87.80	24.05	9.38	158.20	107.55	31.51	15.04	198.80	119.61	39.59	22.42
	12	93.10	77.34	15.45	4.33	109.20	82.72	18.13	5.72	146.00	102.21	24.23	9.47	186.80	114.40	31.00	14.55
	15	74.82	69.53	9.94	2.00	90.17	74.69	11.98	2.76	127.60	94.44	16.95	5.05	167.50	106.29	22.25	8.10
BDCB50																	
5000	8	149.70	112.35	37.26	10.84	172.80	120.38	43.02	13.93	221.00	145.82	55.03	21.41	273.30	161.45	68.05	31.06
	10	136.00	106.17	27.09	6.19	158.00	113.65	31.47	8.04	206.60	139.26	41.15	12.82	259.10	154.99	51.61	19.04
	12	121.20	99.60	20.12	3.68	142.70	106.93	23.69	4.88	191.20	132.42	31.74	8.11	244.10	148.37	40.52	12.42
	15	95.90	88.81	12.74	1.65	116.80	95.86	15.51	2.32	166.80	122.01	22.15	4.31	219.60	137.96	29.17	6.95
BDCB60																	
6000	8	172.40	130.85	42.91	15.23	198.60	139.83	49.45	19.51	253.70	169.06	63.16	29.93	313.50	186.58	78.04	43.38
	10	157.60	124.21	31.39	8.79	182.20	132.48	36.29	11.31	237.40	161.71	47.28	17.94	297.30	179.35	59.21	26.60
	12	142.40	117.51	23.64	5.34	166.10	125.38	27.57	6.98	220.10	154.16	36.53	11.38	280.30	171.93	46.53	17.36
	15	117.40	106.83	15.59	2.58	139.90	114.25	18.58	3.49	194.60	143.35	25.84	6.18	252.90	160.47	33.60	9.76
BDCB70																	
7000	8	198.00	151.06	49.29	13.41	228.30	161.39	56.82	17.18	292.10	195.19	72.71	26.44	361.20	215.47	89.93	38.40
	10	180.50	143.17	35.95	7.70	208.90	152.74	41.61	9.93	272.70	186.53	54.31	15.79	342.00	206.96	68.11	23.47
	12	161.90	135.04	26.88	4.62	189.50	144.23	31.46	6.08	252.20	177.65	41.87	9.98	321.80	198.23	53.42	15.27
	15	129.70	121.37	17.23	2.12	156.80	130.41	20.82	2.95	221.60	164.74	29.43	5.37	289.40	184.63	38.44	8.54
BDCB80																	
8000	8	224.80	170.91	55.96	17.20	259.50	182.80	64.61	22.11	332.10	221.17	82.67	34.04	410.80	244.34	102.30	49.46
	10	205.00	161.97	40.84	9.88	237.30	172.82	47.27	12.74	310.20	211.36	61.78	20.33	389.00	234.71	77.49	30.24
	12	185.20	153.20	30.74	6.00	216.10	163.53	35.87	7.84	287.00	201.20	47.63	12.85	366.30	224.81	60.80	19.67
	15	152.00	139.05	20.19	2.87	181.60	148.86	24.12	3.91	253.10	186.88	33.61	6.95	329.70	209.45	43.79	11.01



Performance Data Cooling Capacities Model BDHA/BDCB

TC = Total Capacity, MBH
 SC = Sensible Capacity, MBH
 GPM = Water Flow Rate, gpm
 PD = Water Pressure Drop, Ft of Water

Table 3 - Cooling Capacity for 3-Row Coil

Entering Water Temp (EWT) 43 F

Rated Airflow	WTR CFM	Entering Air Temp - EDB/EWB (F)															
		72/61				74/63				80/67				84/71			
		TC	SC	GPM	PD	TC	SC	GPM	PD	TC	SC	GPM	PD	TC	SC	GPM	PD
BDHA20																	
2000	8	47.19	38.19	11.75	5.81	55.74	40.88	13.88	7.77	75.69	50.54	18.85	13.24	97.59	56.44	24.30	20.66
	10	41.51	35.81	8.27	3.14	49.55	38.32	9.87	4.27	68.84	47.74	13.72	7.56	90.76	53.69	18.08	12.25
	12	35.44	33.33	5.89	1.73	42.95	35.67	7.13	2.42	62.22	45.14	10.33	4.60	83.55	50.89	13.87	7.68
	15	23.86	23.54	3.17	0.59	31.55	30.10	4.19	0.96	51.60	41.10	6.86	2.24	71.81	46.50	9.54	3.97
BDHA25																	
2500	8	57.44	46.79	14.30	9.05	67.65	50.02	16.85	12.04	91.55	61.71	22.80	20.42	117.80	68.79	29.33	31.77
	10	51.37	44.24	10.24	5.03	60.72	47.14	12.10	6.73	83.54	58.43	16.65	11.72	109.80	65.56	21.87	18.90
	12	45.08	41.64	7.49	2.91	53.79	44.32	8.93	3.95	76.05	55.44	12.63	7.21	101.40	62.28	16.84	11.90
	15	34.40	32.74	4.57	1.23	42.56	39.90	5.66	1.78	64.86	51.13	8.62	3.68	88.16	57.29	11.71	6.28
BDHA34																	
3400	8	77.82	64.48	19.38	9.15	91.30	69.02	22.74	12.08	122.40	85.40	30.47	20.14	156.20	95.51	38.89	30.90
	10	69.42	60.87	13.83	5.06	81.98	65.04	16.33	6.76	111.80	80.90	22.28	11.60	145.80	91.08	29.04	18.43
	12	60.35	57.07	10.02	2.88	72.22	60.98	11.99	3.93	101.90	76.80	16.91	7.14	134.80	86.54	22.38	11.63
	15	38.51	37.97	5.14	1.00	55.28	54.15	7.35	1.67	86.23	70.53	11.46	3.60	117.30	79.61	15.58	6.15
BDCB40																	
4000	8	95.16	78.21	23.70	9.09	111.40	83.68	27.74	11.97	148.60	103.34	37.00	19.78	189.00	115.36	47.08	10.18
	10	85.48	74.04	23.70	9.09	100.60	79.07	20.05	6.77	136.50	98.13	27.19	11.49	177.10	110.28	35.29	18.12
	12	75.29	69.74	12.50	2.97	89.53	74.43	1.49	4.00	125.00	93.35	20.75	7.14	164.50	105.03	27.31	11.53
	15	57.77	56.16	7.68	1.27	71.27	67.01	9.47	1.82	107.20	86.19	14.24	3.69	144.30	97.00	19.18	6.18
BDCB50																	
5000	8	124.40	101.01	30.97	7.76	145.70	108.17	36.28	10.22	193.90	133.62	48.28	16.83	246.20	149.30	61.32	25.58
	10	111.40	95.37	22.20	4.33	131.60	102.15	26.23	5.78	178.60	127.00	35.58	9.83	231.30	142.84	46.08	15.44
	12	97.53	89.51	16.20	2.49	116.60	95.86	19.37	3.40	163.70	120.76	27.18	6.12	215.40	136.17	35.76	9.87
	15	72.67	70.69	9.66	1.01	91.33	85.55	12.14	1.50	139.70	111.05	18.57	3.14	189.30	125.64	25.15	5.31
BDCB60																	
6000	8	143.60	118.03	35.75	10.94	167.60	126.03	41.73	14.33	222.40	222.40	55.37	23.49	282.10	172.71	70.24	35.65
	10	130.10	112.17	25.91	6.22	152.40	119.52	30.37	8.20	205.30	147.84	40.90	13.77	265.10	165.55	52.83	21.53
	12	115.90	106.24	19.25	3.70	137.00	113.08	22.75	4.94	189.10	141.07	31.40	8.64	247.20	158.13	41.05	13.78
	15	92.19	89.84	12.25	1.68	111.90	102.86	14.87	2.35	164.30	131.11	21.84	4.56	218.80	146.80	29.07	7.50
BDCB70																	
7000	8	164.80	136.41	41.04	9.63	192.40	145.52	47.91	12.61	255.70	179.17	63.67	20.71	324.80	199.44	80.88	31.51
	10	148.60	129.34	29.61	5.43	174.50	137.85	34.77	7.18	235.60	170.58	46.93	12.10	304.70	190.94	60.71	18.96
	12	131.10	121.98	21.77	3.17	155.70	130.03	25.86	4.27	216.40	162.61	35.94	7.56	283.40	182.20	47.06	12.10
	15	99.35	94.56	13.25	1.38	123.60	117.04	16.42	1.93	186.40	150.61	24.77	3.93	249.90	168.91	33.20	6.54
BDCB80																	
8000	8	186.90	153.98	46.54	12.32	218.50	164.57	54.42	16.18	290.80	202.94	72.43	26.68	369.50	226.20	92.02	40.61
	10	169.10	146.26	33.70	6.98	198.20	155.89	39.49	9.20	267.80	193.04	53.35	15.55	346.80	216.48	24.45	8.64
	12	150.60	138.53	25.01	4.14	178.10	147.47	29.57	5.54	245.90	183.93	40.84	9.71	322.80	206.58	53.60	15.60
	15	118.70	115.53	15.78	1.85	144.90	133.93	19.26	2.61	213.60	170.91	28.38	5.12	284.60	191.39	37.82	8.43



Performance Data Cooling Capacities Model BDHA/BDCB

TC = Total Capacity, MBH
 SC = Sensible Capacity, MBH
 GPM = Water Flow Rate, gpm
 PD = Water Pressure Drop, Ft of Water

Table 4 - Cooling Capacity for 3-Row Coil

Entering Water Temp (EWT) 45 F

Rated		Entering Air Temp - EDB/EWB (F)															
Airflow	WTR	72/61				74/63				80/67				84/71			
CFM		TC	SC	GPM	PD	TC	SC	GPM	PD	TC	SC	GPM	PD	TC	SC	GPM	PD
BDHA20																	
2000	8	40.92	35.57	10.19	4.50	48.77	38.00	12.15	6.11	68.01	47.41	16.94	10.90	89.99	53.34	22.39	17.76
	10	35.70	33.44	7.11	2.40	42.88	35.63	8.55	3.30	61.49	44.85	12.25	6.17	82.82	50.60	16.51	10.37
	12	30.03	28.67	4.99	1.29	36.64	33.20	6.09	1.82	55.07	42.38	1.95	3.69	75.33	47.78	12.51	6.36
	15	17.59	17.36	2.34	0.35	25.21	24.82	3.35	0.64	44.87	38.63	5.97	1.74	63.75	43.62	8.47	3.21
BDHA25																	
2500	8	50.02	43.67	12.46	7.06	59.28	46.55	14.77	9.49	82.33	57.94	20.51	16.83	108.50	65.05	27.02	27.31
	10	44.49	41.42	8.87	3.89	52.88	43.97	10.54	5.25	75.21	54.90	15.04	9.57	100.20	61.85	19.98	16.01
	12	38.69	36.97	6.43	2.22	46.38	41.39	7.70	3.03	67.63	52.19	11.23	5.83	91.53	58.54	15.20	9.88
	15	28.15	27.78	3.74	0.86	35.62	33.88	4.74	1.30	56.97	48.20	7.57	2.92	78.73	53.87	10.47	5.12
BDHA34																	
3400	8	67.76	60.17	16.88	7.13	80.05	64.23	19.94	9.54	110.10	80.20	27.42	16.62	143.90	90.31	35.85	26.58
	10	60.00	56.92	11.96	3.90	71.31	60.57	14.21	5.26	100.30	76.03	19.94	9.48	133.20	85.88	26.54	15.62
	12	51.48	50.13	8.55	2.17	62.02	56.85	10.30	3.00	90.52	72.23	15.04	5.77	121.70	81.34	20.22	9.67
	15	25.71	25.49	3.43	0.44	44.43	44.30	5.91	1.14	75.43	66.37	10.03	2.84	104.60	74.78	13.91	5.00
BDCB40																	
4000	8	82.96	72.96	20.66	7.11	97.87	77.90	24.38	9.48	133.90	97.04	33.35	16.37	174.40	109.15	43.44	26.01
	10	74.04	69.22	14.76	3.94	87.75	73.69	17.49	5.29	122.30	92.27	24.38	9.43	162.00	104.07	32.29	15.40
	12	64.59	63.02	10.73	2.26	77.24	69.40	12.83	3.08	111.30	87.84	18.49	5.80	148.90	98.78	24.73	9.62
	15	47.25	46.13	6.28	0.89	59.62	58.24	7.92	1.33	94.21	81.16	12.52	2.93	129.20	91.18	17.17	5.06
BDCB50																	
5000	8	108.30	94.02	26.97	6.05	128.10	100.63	31.90	8.10	174.90	125.43	43.57	13.96	227.40	141.21	56.64	22.09
	10	96.23	88.97	19.18	3.33	114.60	94.99	22.84	4.51	160.20	119.30	31.93	8.08	211.90	134.76	42.23	13.15
	12	83.25	81.10	13.83	1.88	100.30	89.13	16.66	2.60	145.70	113.38	24.20	4.96	195.30	128.03	32.44	8.26
	15	57.77	56.47	7.68	0.68	70.33	66.46	9.38	1.04	122.40	104.27	16.27	2.48	169.30	117.94	22.51	4.34
BDCB60																	
6000	8	125.50	110.21	31.25	8.59	147.50	117.44	36.75	11.39	200.60	145.82	49.96	19.46	260.30	163.53	64.84	30.74
	10	113.00	105.01	22.53	4.84	133.30	111.58	26.57	6.45	184.30	139.12	36.74	11.32	242.80	156.31	48.39	18.32
	12	99.93	99.60	16.60	2.84	118.70	105.59	19.72	3.82	168.80	132.87	28.05	7.04	224.10	148.88	37.23	11.53
	15	76.72	74.28	10.20	1.21	94.71	92.70	12.59	1.75	145.10	123.56	19.28	3.65	196.50	138.21	26.11	6.18
BDCB70																	
7000	8	144.00	127.37	35.86	7.55	169.30	135.65	42.17	10.01	230.00	168.38	57.39	17.14	299.60	188.81	74.61	27.14
	10	128.90	121.06	25.70	4.21	152.40	128.66	30.38	5.63	211.40	160.56	42.13	9.94	278.70	180.31	55.56	16.12
	12	112.50	109.75	18.69	2.41	134.50	121.37	22.34	3.29	193.10	153.19	32.07	6.15	256.60	171.57	42.63	10.10
	15	79.12	76.63	10.52	0.89	92.47	88.33	12.33	1.29	164.00	141.87	21.80	3.12	223.90	158.96	29.76	5.37
BDCB80																	
8000	8	163.20	143.74	40.64	9.65	192.10	153.29	47.86	12.83	262.20	190.70	65.31	22.08	340.90	214.05	84.92	35.00
	10	147.00	136.97	29.29	5.43	173.30	145.48	34.55	7.24	240.10	181.59	47.86	12.76	317.40	204.41	63.26	20.79
	12	129.70	122.91	21.55	3.17	154.30	137.75	25.63	4.29	219.50	173.25	36.46	7.10	292.40	194.43	48.57	13.03
	15	97.98	94.70	13.02	1.32	122.20	119.44	16.24	1.93	188.50	161.10	25.05	4.09	255.40	180.11	33.95	6.93



Performance Data Cooling Capacities Model BDHA/BDCB

TC = Total Capacity, MBH
 SC = Sensible Capacity, MBH
 GPM = Water Flow Rate, gpm
 PD = Water Pressure Drop, Ft of Water

Table 5 - Cooling Capacity for 3-Row Coil

Entering Water Temp (EWT) 50 F

Rated Airflow	WTR CFM	Entering Air Temp - EDB/EWB (F)															
		72/61				74/63				80/67				84/71			
		TC	SC	GPM	PD	TC	SC	GPM	PD	TC	SC	GPM	PD	TC	SC	GPM	PD
BDHA20																	
2000	8	28.15	26.80	7.02	2.31	33.30	31.94	8.30	3.09	49.61	40.34	12.37	6.18	69.38	45.61	17.30	11.09
	10	24.14	23.83	4.82	1.20	28.76	27.36	5.74	1.62	44.32	38.43	8.84	3.43	62.13	43.05	12.39	6.17
	12	17.46	17.23	2.90	0.50	23.61	23.26	3.93	0.84	38.99	36.52	6.48	1.99	55.32	40.69	9.20	3.66
	15	11.73	11.57	1.56	0.17	14.11	13.89	1.88	0.23	30.33	30.01	4.04	0.87	44.80	37.19	5.96	1.71
BDHA25																	
2500	8	34.86	33.20	8.69	3.70	40.95	39.30	10.21	4.90	60.22	49.39	15.01	9.58	83.87	55.71	20.91	17.09
	10	30.72	30.30	6.13	2.01	36.16	34.42	7.21	2.67	54.33	47.22	10.84	5.40	75.40	52.70	15.04	9.56
	12	25.11	24.77	4.17	1.03	30.93	29.27	5.14	1.48	48.68	45.19	8.09	3.24	67.70	50.02	11.26	5.74
	15	13.52	13.35	1.80	0.24	16.29	16.06	2.17	0.33	39.84	37.95	5.30	1.54	56.59	46.28	7.53	2.84
BDHA34																	
3400	8	47.05	45.67	11.73	3.72	55.22	54.15	13.77	4.91	80.63	68.36	20.10	9.48	111.40	77.36	27.78	16.68
	10	41.05	40.87	8.19	1.99	48.41	47.22	9.66	2.64	72.72	65.33	14.51	5.35	100.30	73.19	20.01	9.37
	12	31.68	31.54	5.27	0.92	40.57	39.32	6.75	1.41	64.80	62.38	10.77	3.18	90.13	69.46	14.98	5.61
	15	16.95	16.67	2.26	0.21	20.45	20.33	2.72	0.29	51.72	51.13	6.88	1.45	74.60	63.97	9.93	2.73
BDCB40																	
4000	8	57.65	56.03	14.37	3.71	67.69	65.62	16.87	4.90	98.49	82.81	24.55	9.41	135.50	93.57	33.77	16.43
	10	50.99	49.09	10.17	2.03	59.91	58.55	11.95	2.68	89.26	79.25	17.80	5.35	122.70	88.75	24.48	9.32
	12	42.01	41.23	6.99	1.06	51.37	49.91	8.54	1.49	80.13	75.82	13.32	3.22	110.90	84.41	18.43	5.66
	15	23.69	23.18	3.15	0.27	28.39	28.12	3.78	0.36	65.73	65.14	8.74	1.54	93.07	78.08	12.38	2.82
BDCB50																	
5000	8	74.60	72.64	18.60	3.12	88.09	84.30	21.96	4.15	128.80	106.71	32.11	8.04	177.30	120.98	44.19	14.04
	10	65.59	63.80	13.08	1.69	77.52	75.84	15.46	2.25	116.60	101.99	23.26	4.57	161.00	114.79	32.11	8.00
	12	52.95	51.10	8.80	0.85	65.74	63.96	10.93	1.23	104.20	97.32	17.32	2.73	145.50	109.04	24.18	4.86
	15	32.49	32.06	4.32	0.25	38.82	37.81	5.16	0.34	84.29	83.60	11.21	1.28	121.30	100.36	16.14	2.39
BDCB60																	
6000	8	87.67	85.28	21.85	4.53	102.70	99.21	25.60	5.95	148.30	124.80	36.98	11.29	202.70	140.55	50.53	19.49
	10	78.36	75.91	15.63	2.52	91.82	89.77	18.32	3.32	135.30	119.78	26.98	6.49	184.80	133.78	36.85	11.17
	12	66.52	64.64	11.06	1.38	79.98	77.86	13.30	1.90	122.50	115.03	20.37	3.96	168.00	127.60	27.92	6.86
	15	36.53	35.94	4.86	0.33	53.21	51.75	7.08	0.63	102.50	101.69	13.64	1.97	143.10	118.74	19.04	3.50
BDCB70																	
7000	8	100.60	97.75	25.07	3.98	117.80	114.76	29.36	5.23	170.30	144.31	42.46	9.94	232.70	162.31	58.01	17.14
	10	88.97	85.29	17.75	2.18	104.50	102.08	20.85	2.87	155.00	138.46	30.92	5.69	211.70	154.41	42.23	9.80
	12	72.34	70.63	12.03	1.11	89.37	86.81	14.86	1.59	139.60	132.68	23.21	3.44	192.00	147.19	31.92	5.99
	15	38.07	37.37	5.07	0.25	45.78	45.27	6.09	0.34	114.30	113.24	15.21	1.64	162.00	136.56	21.55	3.01
BDCB80																	
8000	8	114.10	110.93	28.44	5.09	133.50	129.51	33.29	6.69	193.20	162.92	48.17	12.72	265.10	183.84	66.09	22.13
	10	101.90	98.60	20.32	2.83	119.40	116.57	23.81	3.72	175.80	156.24	35.07	7.28	240.80	174.64	48.03	12.60
	12	85.77	83.68	14.26	1.52	103.70	100.77	17.23	2.12	159.30	150.08	26.48	4.45	218.20	166.40	36.28	7.69
	15	40.86	40.01	5.44	0.29	49.25	48.61	6.55	0.40	132.80	131.68	17.67	2.19	185.90	154.85	24.73	3.92



Performance Data

Cooling Capacities

Model BDHA/BDCB

TC = Total Capacity, MBH
 SC = Sensible Capacity, MBH
 GPM = Water Flow Rate, gpm
 PD = Water Pressure Drop, Ft of Water

Table 6 - Cooling Capacity for 4-Row Coil

Entering Water Temp (EWT) 40 F

Rated Airflow	WTR	Entering Air Temp - EDB/EWB (F)															
		72/61				74/63				80/67				84/71			
		TC	SC	GPM	PD	TC	SC	GPM	PD	TC	SC	GPM	PD	TC	SC	GPM	PD
BDHA20																	
2000	8	65.52	47.05	16.31	13.91	75.81	50.39	18.87	17.94	97.52	60.78	24.28	27.87	121.20	67.20	30.18	40.83
	10	59.89	44.51	11.93	8.03	69.79	47.70	13.90	10.47	91.67	58.18	18.26	16.84	115.40	64.67	22.99	25.21
	12	54.00	41.92	8.96	4.86	63.57	45.01	10.55	6.45	85.37	55.23	14.17	10.77	109.30	62.02	18.14	16.57
	15	44.33	37.84	5.89	2.33	53.43	40.75	7.10	3.22	75.37	51.32	10.01	5.84	99.22	57.90	13.18	6.42
BDHA25																	
2500	8	82.37	59.40	20.51	22.93	69.69	52.49	9.26	5.64	122.10	76.60	30.40	45.70	151.50	84.60	37.72	66.82
	10	75.71	56.39	15.08	13.35	80.73	57.18	13.40	10.81	115.10	73.45	22.92	27.71	144.60	81.54	28.79	41.36
	12	69.16	53.49	11.48	8.26	87.93	60.35	17.51	17.32	107.50	70.17	17.85	17.80	137.20	78.34	22.77	27.27
	15	58.78	49.04	7.80	4.19	95.16	63.61	23.69	29.52	95.92	65.29	12.74	9.82	125.10	73.32	16.61	15.60
BDHA34																	
3400	8	110.10	81.71	27.42	8.10	127.20	87.69	31.66	10.40	162.90	106.46	40.57	16.03	201.70	118.27	50.21	23.30
	10	99.22	76.73	19.76	4.56	115.90	82.49	23.08	5.97	152.00	101.41	30.27	9.57	191.00	113.36	18.04	14.26
	12	86.57	71.12	14.37	2.61	103.30	76.92	17.15	3.54	140.10	96.10	23.26	60.16	179.60	108.24	29.81	9.27
	15	60.87	60.24	8.09	0.96	79.62	66.88	10.58	1.52	120.20	87.58	15.97	3.11	160.40	99.97	21.30	5.12
BDCB40																	
4000	8	131.10	96.70	32.63	21.44	150.40	103.38	37.43	27.26	190.60	124.60	47.45	41.27	234.20	137.62	58.30	59.26
	10	121.20	92.18	24.14	12.62	139.60	98.43	27.80	16.13	180.10	119.78	35.87	25.16	223.90	132.89	44.59	36.84
	12	111.20	87.67	18.46	7.88	129.00	93.66	21.41	10.19	168.80	114.66	28.02	16.27	212.90	127.94	35.34	24.41
	15	95.00	80.55	12.62	4.04	111.90	86.24	14.86	5.37	151.90	107.33	20.17	9.12	195.00	120.17	25.90	14.08
BDCB50																	
5000	8	174.70	126.62	43.50	18.96	200.40	135.68	49.89	24.09	253.40	163.51	63.08	36.30	310.80	180.98	77.37	51.95
	10	161.90	120.65	32.25	11.20	186.70	129.22	37.19	14.36	240.40	157.38	47.87	22.30	298.10	175.01	59.38	32.51
	12	148.50	114.47	24.65	6.98	172.70	122.82	28.67	9.08	226.20	150.87	37.55	14.52	284.60	168.77	47.24	21.68
	15	126.10	104.59	16.75	3.55	149.50	112.57	19.86	4.77	203.70	140.83	27.06	8.15	262.10	158.74	34.81	12.64
BDCB60																	
6000	8	194.90	143.48	48.51	25.19	223.60	153.38	55.66	32.03	282.90	184.69	70.42	48.36	347.20	203.89	86.43	69.32
	10	180.60	136.91	35.98	14.88	208.10	146.28	41.44	19.04	268.00	177.79	53.37	29.61	332.60	197.12	66.24	43.24
	12	166.30	130.40	27.61	9.34	192.60	139.31	31.98	12.06	251.90	170.56	41.82	19.24	317.00	190.16	52.62	28.76
	15	143.30	120.30	19.04	4.87	168.40	128.70	22.36	6.43	227.20	159.76	30.18	10.83	291.60	179.03	38.73	16.72
BDCB70																	
7000	8	231.70	171.57	57.68	10.68	266.10	183.42	66.25	13.60	338.80	221.70	84.33	20.72	417.40	245.32	103.90	29.88
	10	211.90	162.46	42.21	6.17	245.40	173.93	48.88	7.97	318.30	212.28	63.40	12.52	397.40	236.13	79.15	18.46
	12	189.40	152.43	31.44	3.68	222.90	163.90	37.00	4.88	296.50	202.56	49.22	8.02	376.10	226.56	62.43	12.13
	15	147.30	134.28	19.56	1.61	182.10	146.36	24.18	2.32	260.90	187.14	34.66	4.32	340.60	211.29	45.24	6.87
BDCB80																	
8000	8	263.40	194.61	65.56	13.72	302.90	208.32	75.40	17.51	385.60	251.89	95.99	26.71	475.20	278.89	118.30	38.54
	10	241.60	184.62	48.13	7.97	279.30	197.47	55.63	10.26	362.40	241.22	72.18	16.14	452.50	268.47	90.13	23.81
	12	217.80	173.95	36.16	4.83	255.20	186.71	42.36	6.35	337.50	230.02	56.03	10.33	428.40	257.62	71.11	15.65
	15	175.70	155.72	23.34	2.24	213.00	168.48	28.29	3.13	299.40	213.44	39.76	5.65	388.90	240.52	51.66	8.90



Performance Data Cooling Capacities Model BDHA/BDCB

TC = Total Capacity, MBH
 SC = Sensible Capacity, MBH
 GPM = Water Flow Rate, gpm
 PD = Water Pressure Drop, Ft of Water

Table 7 - Cooling Capacity for 4-Row Coil

Entering Water Temp (EWT) 43 F

Rated Airflow	WTR CFM	Entering Air Temp - EDB/EWB (F)															
		72/61				74/63				80/67				84/71			
		TC	SC	GPM	PD	TC	SC	GPM	PD	TC	SC	GPM	PD	TC	SC	GPM	PD
BDHA20																	
2000	8	54.46	42.12	13.56	9.96	64.09	45.22	15.96	13.23	85.84	55.66	21.38	22.03	109.50	62.13	27.27	33.77
	10	49.18	39.86	9.80	5.63	58.27	42.75	11.61	7.57	79.59	53.03	15.86	13.01	103.40	59.59	20.60	20.56
	12	43.64	37.56	7.25	3.32	52.24	40.25	8.68	4.54	73.22	50.45	12.16	8.15	96.81	56.92	16.08	13.27
	15	34.52	33.87	4.59	1.50	42.47	36.35	5.64	2.14	63.51	46.61	8.44	4.29	85.93	52.69	11.42	7.26
BDHA25																	
2500	8	68.66	53.27	17.10	16.49	80.59	57.13	20.07	20.82	107.60	70.20	26.79	36.18	136.90	78.26	34.10	55.29
	10	62.56	50.64	12.47	9.46	73.67	54.17	14.68	12.58	100.10	67.00	19.93	21.46	129.60	75.16	25.82	33.76
	12	56.50	48.07	9.38	5.75	66.92	51.32	11.11	7.71	92.45	63.88	15.35	13.53	121.70	71.94	20.20	21.87
	15	46.87	44.11	6.23	2.80	56.38	47.06	7.49	3.86	81.48	59.49	10.83	7.31	108.60	66.81	14.43	12.06
BDHA34																	
3400	8	91.37	73.23	22.75	5.74	107.30	78.69	26.72	7.65	143.00	97.39	35.61	12.62	181.90	109.27	45.29	19.22
	10	80.63	68.54	16.06	3.14	96.14	73.82	19.16	4.27	131.50	92.37	26.20	7.35	170.60	104.29	33.99	11.57
	12	68.22	63.30	11.33	1.71	83.35	68.43	13.84	2.42	119.80	87.39	19.89	4.53	158.40	99.16	26.31	7.37
	15	36.54	35.93	4.86	0.39	57.66	56.55	7.66	0.86	100.50	79.13	13.40	2.21	137.90	90.79	18.33	3.90
BDCB40																	
4000	8	109.70	87.02	27.32	15.54	127.70	93.09	31.81	20.27	167.90	114.32	41.82	32.69	211.60	127.38	52.69	49.04
	10	100.60	82.98	20.04	9.01	117.50	88.62	23.42	11.82	156.70	109.41	31.23	19.52	200.70	122.61	39.99	30.09
	12	91.13	78.90	15.13	5.51	107.20	84.67	17.81	7.31	145.90	104.77	24.22	12.47	189.00	117.61	31.38	19.60
	15	75.95	72.52	10.09	2.71	90.83	77.43	12.07	3.70	129.40	105.29	17.19	6.82	170.00	109.80	22.59	10.97
BDCB50																	
5000	8	146.30	113.55	36.44	13.75	170.60	121.90	42.49	17.98	224.00	149.84	55.78	28.93	281.60	167.42	70.13	43.21
	10	134.10	108.07	26.72	7.98	157.30	115.99	31.35	10.53	210.00	143.60	41.84	17.41	268.20	161.39	53.43	26.70
	12	121.20	102.42	20.12	4.85	143.40	109.96	23.82	6.50	195.60	137.31	32.48	11.15	253.60	155.05	42.11	17.52
	15	99.96	93.47	13.28	2.35	120.70	100.36	16.04	3.25	173.40	127.98	23.05	6.09	229.10	144.68	30.44	9.89
BDCB60																	
6000	8	163.20	129.03	40.63	18.26	190.00	138.14	47.32	23.83	249.50	169.52	62.14	38.38	313.90	188.79	78.18	57.44
	10	149.90	123.17	29.87	10.64	175.20	131.63	34.91	13.95	233.60	162.49	46.55	23.04	298.50	182.02	59.47	35.38
	12	136.50	117.38	22.67	6.56	160.50	125.32	26.65	8.68	217.60	155.65	36.13	14.74	281.90	174.86	46.81	23.16
	15	115.10	108.33	15.29	3.29	137.10	115.55	18.22	4.46	193.90	145.76	25.76	8.12	254.40	163.53	33.81	13.03
BDCB70																	
7000	8	193.50	154.18	48.18	7.71	225.80	163.14	56.22	10.09	297.90	203.17	74.19	16.36	376.80	226.86	93.83	24.68
	10	174.00	145.67	34.68	4.33	205.50	156.31	40.94	5.78	276.70	193.90	55.13	9.70	355.60	217.67	70.86	15.03
	12	152.00	136.25	25.24	2.49	182.60	146.58	30.32	3.42	255.40	184.79	42.41	6.11	332.90	208.03	55.28	9.70
	15	101.68	95.85	13.56	0.91	140.40	129.34	18.65	1.46	219.00	169.90	29.11	3.16	295.60	192.76	39.28	5.32
BDCB80																	
8000	8	219.90	174.82	54.75	9.90	256.70	187.40	63.92	12.97	339.20	230.71	84.47	21.10	429.00	257.88	106.80	31.85
	10	199.00	165.70	39.65	5.62	234.20	177.59	46.67	7.46	314.80	220.04	68.00	12.73	405.10	247.38	80.71	19.39
	12	176.00	155.81	29.22	3.93	210.00	167.26	34.87	4.48	291.00	209.88	48.32	7.89	379.30	236.44	62.99	12.52
	15	128.34	123.60	17.11	1.41	167.70	149.82	22.28	2.04	252.50	194.00	33.55	4.15	337.90	219.43	44.90	6.89



Performance Data Cooling Capacities Model BDHA/BDCB

TC = Total Capacity, MBH
 SC = Sensible Capacity, MBH
 GPM = Water Flow Rate, gpm
 PD = Water Pressure Drop, Ft of Water

Table 8 - Cooling Capacity for 4-Row Coil

Entering Water Temp (EWT) 45 F

Rated Airflow	WTR	Entering Air Temp - EDB/EWB (F)															
		72/61				74/63				80/67				84/71			
		TC	SC	GPM	PD	TC	SC	GPM	PD	TC	SC	GPM	PD	TC	SC	GPM	PD
BDHA20																	
2000	8	47.39	39.13	11.80	7.76	56.36	41.95	14.04	10.49	77.68	52.25	19.35	18.36	101.30	58.74	25.24	29.26
	10	42.47	37.09	8.47	4.34	45.04	37.37	7.48	3.48	71.36	49.69	14.22	10.68	94.96	56.18	18.93	17.59
	12	37.35	35.00	6.20	2.52	38.97	35.00	5.55	2.07	65.30	47.31	10.85	6.63	88.07	53.51	14.63	11.16
	15	28.57	27.21	3.80	1.07	35.72	33.74	4.75	1.57	55.86	43.70	7.43	3.41	77.15	49.41	10.25	5.97
BDHA25																	
2500	8	59.87	49.50	14.91	12.89	71.00	53.03	17.69	17.36	97.42	65.91	24.27	30.19	126.80	74.00	31.58	47.94
	10	54.34	47.17	10.83	7.35	64.49	50.34	12.85	9.90	89.86	62.82	17.91	17.66	119.10	70.90	23.74	28.91
	12	48.75	44.86	8.10	4.42	58.12	47.74	9.66	5.99	82.65	59.95	13.73	11.05	110.80	67.65	18.41	18.43
	15	39.68	37.95	5.27	2.09	48.18	43.83	6.40	2.92	72.15	55.88	9.59	5.88	97.84	62.71	13.00	9.98
BDHA34																	
3400	8	79.25	67.95	19.74	4.48	94.25	73.01	23.48	6.06	129.00	91.30	32.14	10.47	168.10	103.22	41.86	16.61
	10	69.01	63.64	13.76	2.38	83.23	68.39	16.59	3.30	118.00	86.62	23.51	6.04	156.30	98.24	31.15	9.86
	12	57.03	55.70	9.47	1.24	70.65	63.27	11.74	1.80	106.20	81.82	17.65	3.65	143.60	93.04	23.85	6.16
	15	32.23	31.73	4.28	0.29	36.53	36.45	4.86	0.39	86.02	73.85	11.43	1.71	122.90	84.92	16.33	3.17
BDCB40																	
4000	8	95.96	80.98	23.90	12.22	112.90	86.63	28.11	16.21	152.10	107.42	37.90	27.31	195.90	120.52	48.79	42.52
	10	87.52	77.38	17.44	7.03	103.20	82.50	20.56	9.36	141.30	102.86	28.17	16.18	184.50	115.75	36.78	25.79
	12	78.78	73.69	13.09	4.25	93.36	78.42	15.51	5.71	130.80	98.47	21.72	10.24	172.30	110.71	28.61	16.55
	15	64.38	62.80	8.56	2.03	77.75	72.13	10.33	2.80	114.80	92.05	15.26	5.50	153.60	103.29	20.42	9.13
BDCB50																	
5000	8	127.80	105.35	31.85	10.79	150.90	113.17	37.57	14.39	203.50	140.72	50.69	24.27	261.30	158.36	65.08	37.62
	10	116.30	100.36	23.19	6.19	138.00	107.63	27.50	8.32	189.30	134.65	37.73	14.42	247.20	152.28	49.27	22.99
	12	104.20	95.26	17.31	3.71	124.50	101.94	20.68	5.05	175.40	128.79	29.14	9.15	231.80	145.82	38.50	14.87
	15	84.03	82.13	11.17	1.73	120.70	100.36	16.04	3.25	153.60	119.84	20.41	4.90	207.10	135.73	27.53	8.24
BDCB60																	
6000	8	142.70	120.04	35.55	14.35	167.90	128.51	41.82	19.06	226.30	159.36	56.38	32.11	290.90	120.11	72.45	49.86
	10	130.60	114.84	26.03	8.31	153.90	122.52	30.67	11.05	210.50	149.07	41.95	19.06	274.70	171.86	54.76	30.38
	12	118.20	109.63	19.63	5.07	139.80	116.66	23.23	6.78	195.10	146.28	32.41	12.10	257.30	164.70	42.74	19.60
	15	97.92	95.57	13.02	2.47	117.70	107.68	15.65	3.40	172.20	137.04	22.89	6.56	230.00	153.77	30.57	10.85
BDCB70																	
7000	8	168.70	143.39	42.02	6.03	199.20	153.65	49.62	8.05	269.60	190.86	67.15	13.64	348.50	214.56	86.80	21.37
	10	150.10	135.49	29.92	3.33	179.20	145.14	35.71	4.52	249.20	182.20	49.66	8.02	326.40	205.29	65.06	12.85
	12	129.00	126.68	21.43	1.86	156.70	135.87	26.03	2.60	227.90	173.47	37.85	4.98	302.70	195.57	50.28	8.16
	15	71.27	70.18	9.47	0.45	113.00	110.66	15.02	1.00	191.70	159.04	25.48	2.49	265.40	180.84	35.28	4.37
BDCB80																	
8000	8	191.80	162.58	47.79	7.75	226.40	174.21	56.38	10.34	306.80	216.65	76.43	17.58	396.90	243.91	98.87	27.59
	10	172.10	154.16	34.30	4.34	204.70	165.01	40.79	5.86	283.40	206.67	56.48	10.31	372.00	233.32	74.14	16.59
	12	150.30	145.13	24.96	2.49	181.10	155.29	30.08	3.44	260.10	197.12	43.20	6.44	345.00	222.29	57.30	10.53
	15	96.51	89.84	12.87	0.85	138.80	138.36	18.45	1.46	222.00	181.85	29.50	3.30	303.90	205.98	40.40	5.69



Performance Data Cooling Capacities Model BDHA/BDCB

TC = Total Capacity, MBH
 SC = Sensible Capacity, MBH
 GPM = Water Flow Rate, gpm
 PD = Water Pressure Drop, Ft of Water

Table 9 - Cooling Capacity for 4-Row Coil

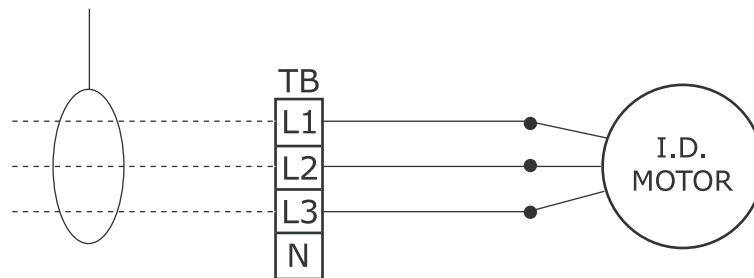
Entering Water Temp (EWT) 50 F

Rated Airflow	WTR CFM	Entering Air Temp - EDB/EWB (F)															
		72/61				74/63				80/67				84/71			
		TC	SC	GPM	PD	TC	SC	GPM	PD	TC	SC	GPM	PD	TC	SC	GPM	PD
BDHA20																	
2000	8	32.33	30.94	8.06	3.92	38.62	34.85	9.63	5.34	57.16	44.18	14.25	10.56	79.54	50.28	19.83	18.82
	10	28.78	27.43	5.74	2.17	34.30	33.20	6.84	2.94	51.92	42.23	10.36	6.03	72.50	47.72	14.46	10.79
	12	24.53	24.20	4.08	1.20	29.74	28.32	4.94	1.67	46.78	40.36	7.78	3.65	65.81	45.33	10.94	6.60
	15	14.95	14.76	1.99	0.35	20.47	20.16	2.72	0.59	38.87	37.54	5.17	1.79	55.78	41.88	7.42	3.34
BDHA25																	
2500	8	41.23	39.47	10.28	6.62	48.98	44.13	12.21	8.93	71.98	55.82	17.94	17.47	99.68	63.42	24.85	30.90
	10	37.32	35.62	7.44	3.76	44.19	42.29	8.82	5.04	65.72	53.46	13.11	10.05	91.24	60.30	18.20	17.82
	12	32.89	32.44	5.47	2.20	39.23	37.43	6.52	2.98	59.92	51.32	9.96	6.21	83.21	57.42	13.83	10.99
	15	21.88	21.59	2.91	0.74	30.52	28.86	4.06	1.31	51.26	48.20	6.82	3.19	71.83	53.44	9.56	5.73
BDHA34																	
3400	8	53.70	52.38	13.39	2.24	64.04	60.61	15.96	3.04	95.04	77.36	23.69	6.03	131.10	88.09	32.68	10.57
	10	45.68	44.45	9.11	1.15	54.89	53.75	10.95	1.58	85.16	73.52	16.99	3.37	118.90	83.41	23.71	6.01
	12	26.63	25.82	4.43	0.33	43.56	43.46	7.24	0.77	74.58	69.54	12.40	1.94	106.50	78.80	17.71	3.60
	15	21.46	21.21	2.86	0.15	25.77	25.71	3.43	0.21	61.73	54.67	8.21	0.96	85.86	71.38	11.42	1.67
BDCB40																	
4000	8	66.49	64.93	16.58	6.34	78.50	72.43	19.57	8.46	113.30	91.49	28.25	16.04	154.10	103.47	18.43	27.46
	10	60.37	58.81	12.04	3.63	71.10	69.48	14.18	4.82	104.20	87.89	20.78	9.34	142.10	98.87	28.35	16.06
	12	53.36	52.56	8.87	2.13	63.30	61.98	10.52	2.86	95.35	84.50	15.85	5.81	130.50	94.48	21.70	10.03
	15	35.18	34.68	4.68	0.70	49.41	48.56	6.57	1.26	81.87	79.47	10.89	3.01	113.50	88.23	15.09	5.30
BDCB50																	
5000	8	87.41	85.50	21.79	5.47	104.20	93.69	25.98	7.43	151.50	119.02	37.77	14.24	207.00	135.73	51.60	24.58
	10	79.05	77.09	15.77	3.11	93.96	89.62	18.74	4.20	139.20	114.20	27.77	8.29	191.20	129.55	38.15	14.43
	12	69.45	67.43	11.55	1.81	83.16	81.54	13.83	2.47	127.00	109.48	21.12	5.13	175.80	123.64	29.23	9.03
	15	41.87	40.09	5.57	0.51	63.52	61.68	8.45	1.05	108.20	102.32	14.40	2.63	152.40	114.90	20.28	4.75
BDCB60																	
6000	8	98.82	96.48	24.64	7.44	116.80	107.35	29.11	9.94	168.50	135.54	42.00	18.82	229.50	153.57	57.21	32.34
	10	90.11	87.75	17.97	4.29	106.20	103.12	21.18	5.69	155.10	130.33	30.94	11.00	211.90	146.80	42.27	18.95
	12	80.21	77.79	13.33	2.55	95.08	93.09	15.81	3.42	142.40	125.45	23.68	6.88	194.90	140.36	32.41	11.87
	15	57.52	56.57	7.65	0.97	75.68	73.50	10.07	1.56	123.20	118.22	16.39	3.61	170.30	131.31	22.65	6.33
BDCB70																	
7000	8	115.50	112.79	28.79	3.07	137.20	128.05	34.21	4.14	200.40	162.46	49.96	7.99	273.10	183.87	68.08	13.71
	10	101.10	98.28	20.17	1.65	120.50	116.20	24.03	2.24	182.20	155.39	36.35	4.58	250.60	175.22	49.99	7.96
	12	78.19	76.33	13.00	0.77	100.70	98.28	16.74	1.19	162.90	148.03	27.09	2.73	228.00	166.71	37.90	4.90
	15	47.81	47.32	6.36	0.22	57.21	56.96	7.61	0.30	129.90	129.12	17.28	1.25	190.60	153.12	25.36	2.42
BDCB80																	
8000	8	131.70	128.64	32.84	3.96	156.30	145.22	38.96	5.33	227.70	184.10	56.76	10.26	311.30	208.84	77.61	17.72
	10	116.70	113.53	23.28	2.17	138.60	138.27	27.65	2.93	207.00	176.29	41.41	5.90	285.20	198.77	56.89	10.25
	12	96.18	93.40	15.99	1.13	118.50	115.79	19.71	1.62	187.00	168.39	31.09	3.57	259.90	189.31	43.21	6.32
	15	51.49	48.35	6.85	0.26	61.76	60.85	8.22	0.36	153.10	151.12	20.37	1.70	220.20	174.82	29.30	3.20

Wiring Diagram

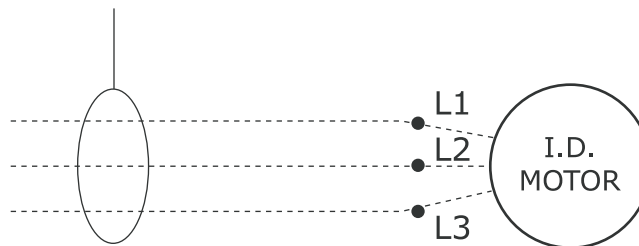
BDHA20-34

POWER SUPPLY
380V./3PH./50HZ.



BDCB40-80

POWER SUPPLY
380V./3PH./50HZ.

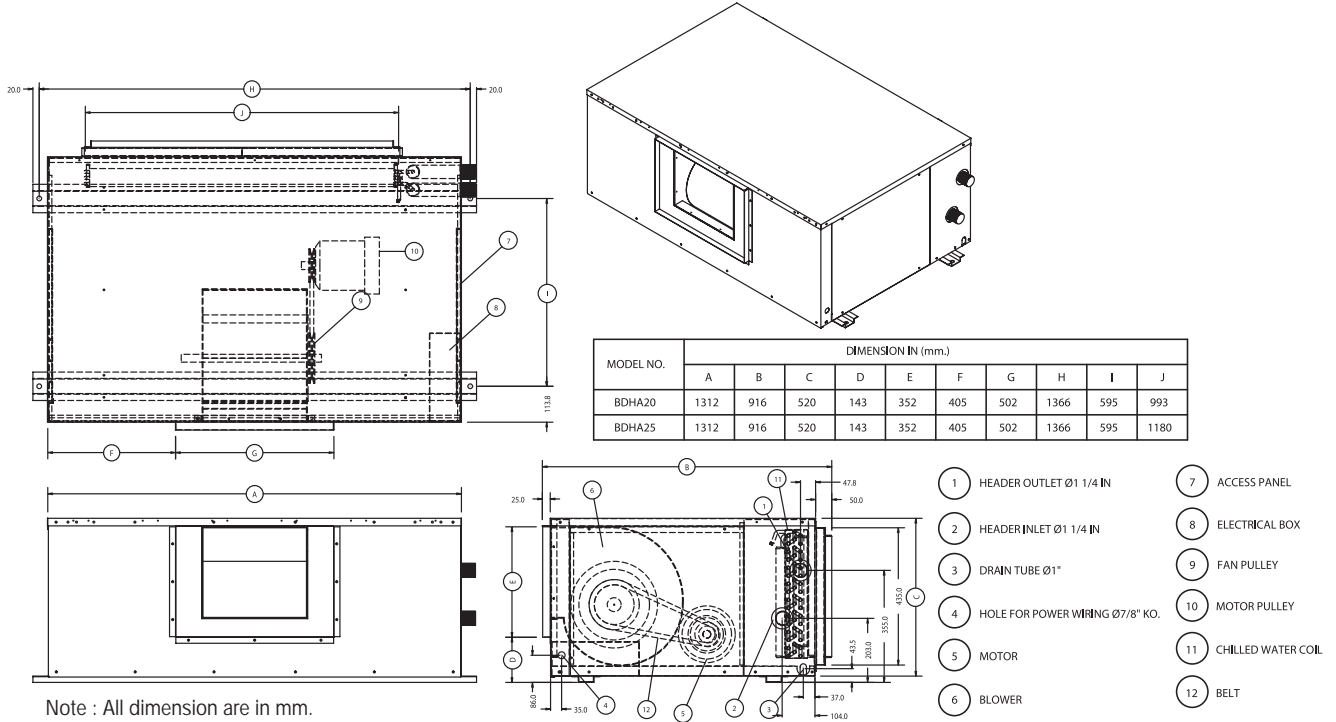


LEGEND	
DEVICE DESIGNATION	DESCRIPTION
TB	TERMINAL BLOCK
—————	FACTORY WIRING & DEVICE BY MFR.
-----	FIELD WIRING
I.D. MOTOR	INDUCTION MOTOR 380V. 3PH. 50HZ.

Caution : Disconnect the power supply before opening the control box or servicing

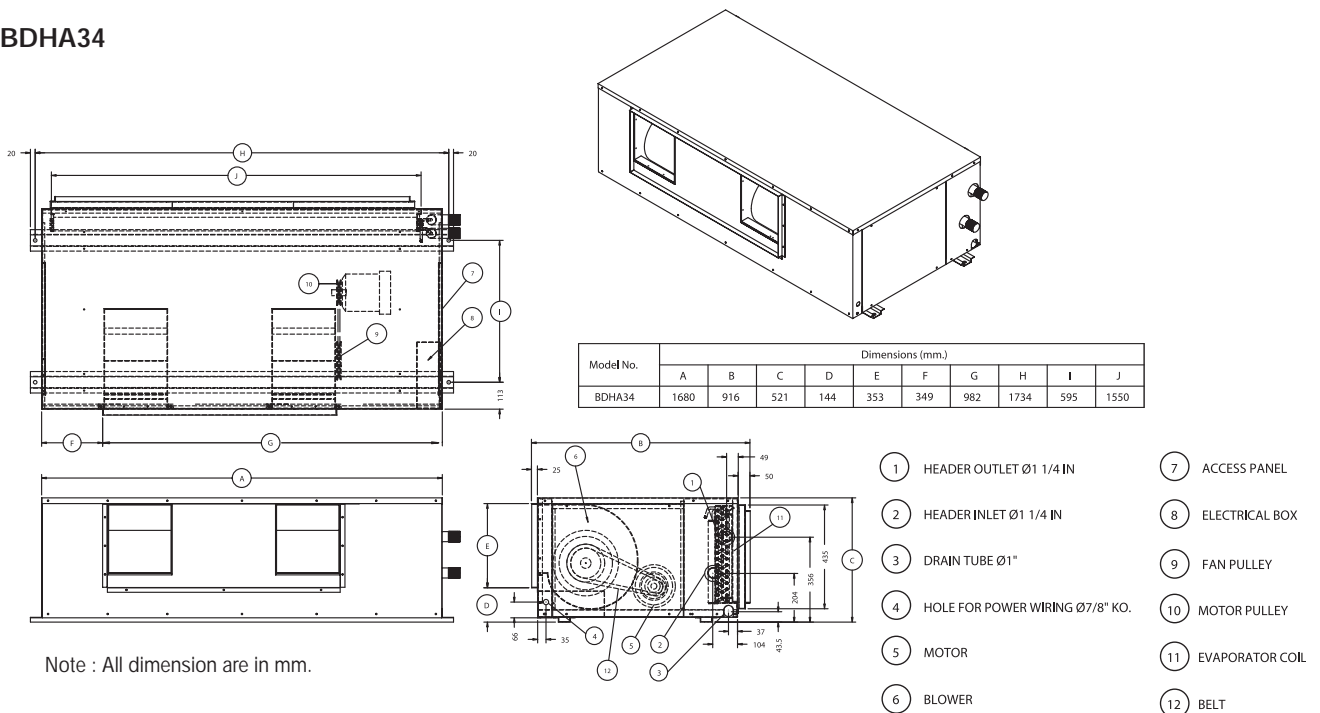
Air Handler Unit Dimensional Data

BDHA20-25



Note : All dimension are in mm.

BDHA34

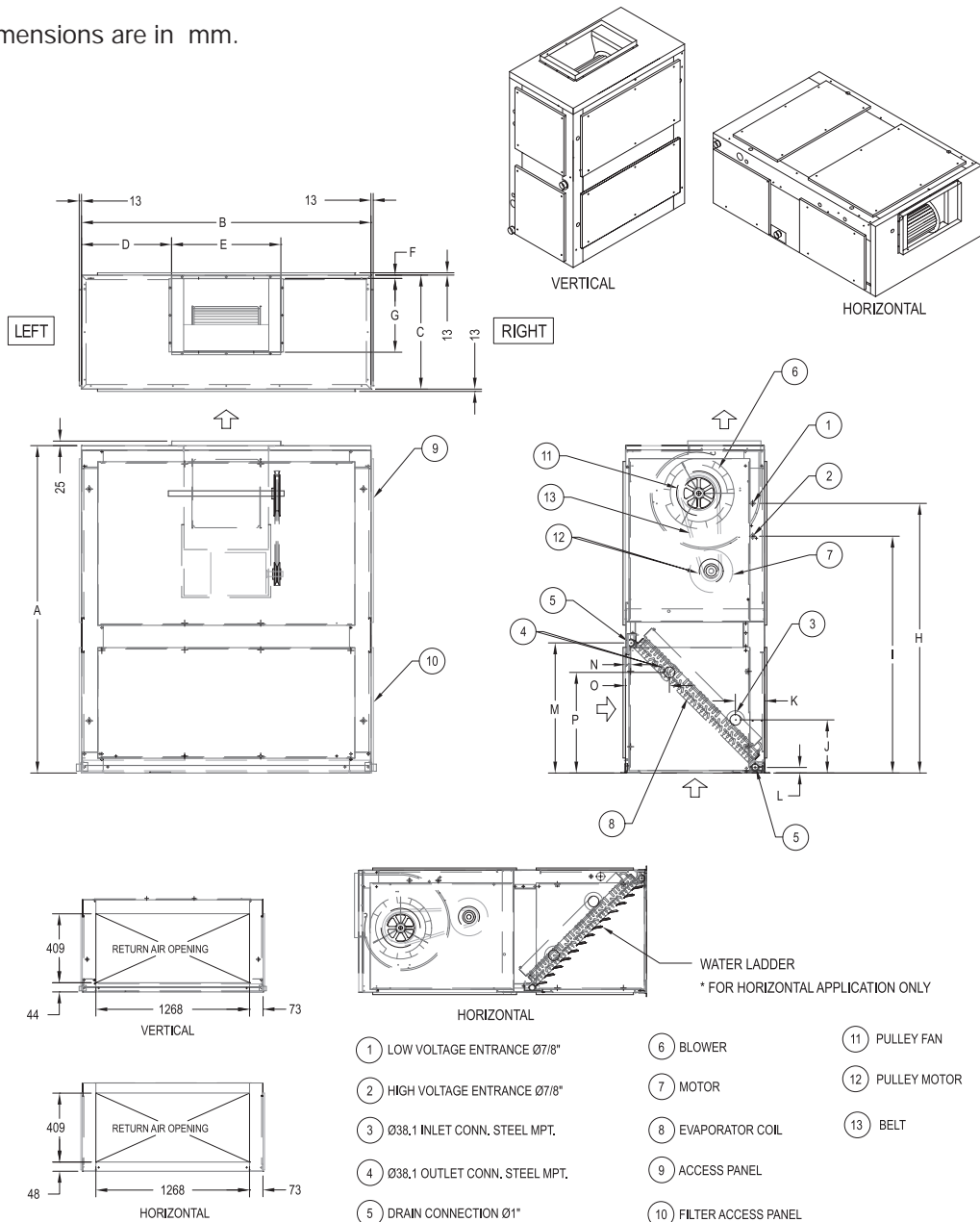


Note : All dimension are in mm.

Air Handler Unit Dimensional Data

BDCB40

Note : All Dimensions are in mm.



Model No.	Dimensions mm.						
	A	B	C	D	E	F	G
BDCB40	1523	1410	635	402	606	20	408

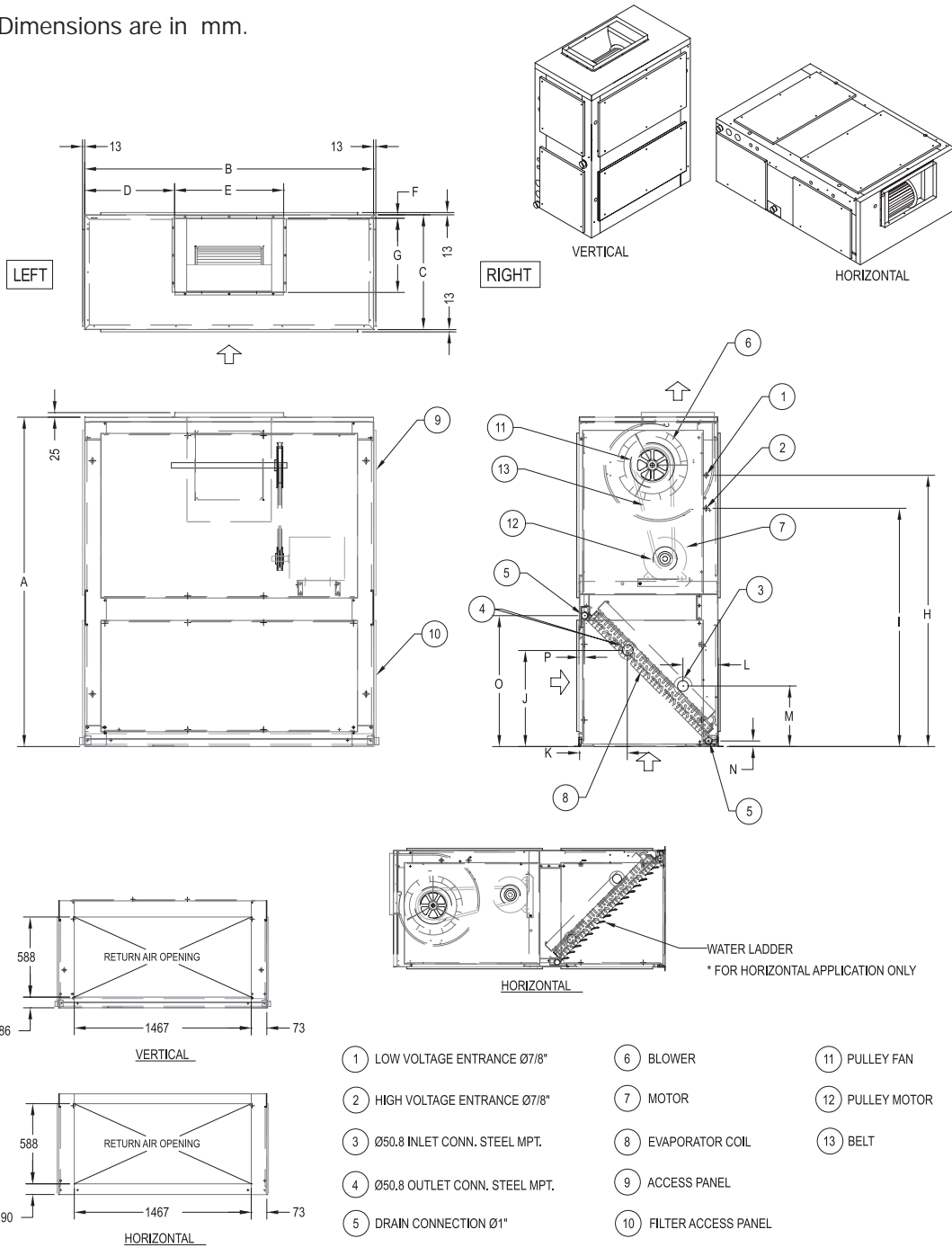
Model No.	Dimensions mm.						
	H	I	J	K	L	M	N
BDCB40	1200	1018	300	178	30	578	282

Model No.	Dimensions mm.	
	O	P
BDCB40	253	422

Air Handler Unit Dimensional Data

BDCB50-60

Note : All Dimensions are in mm.



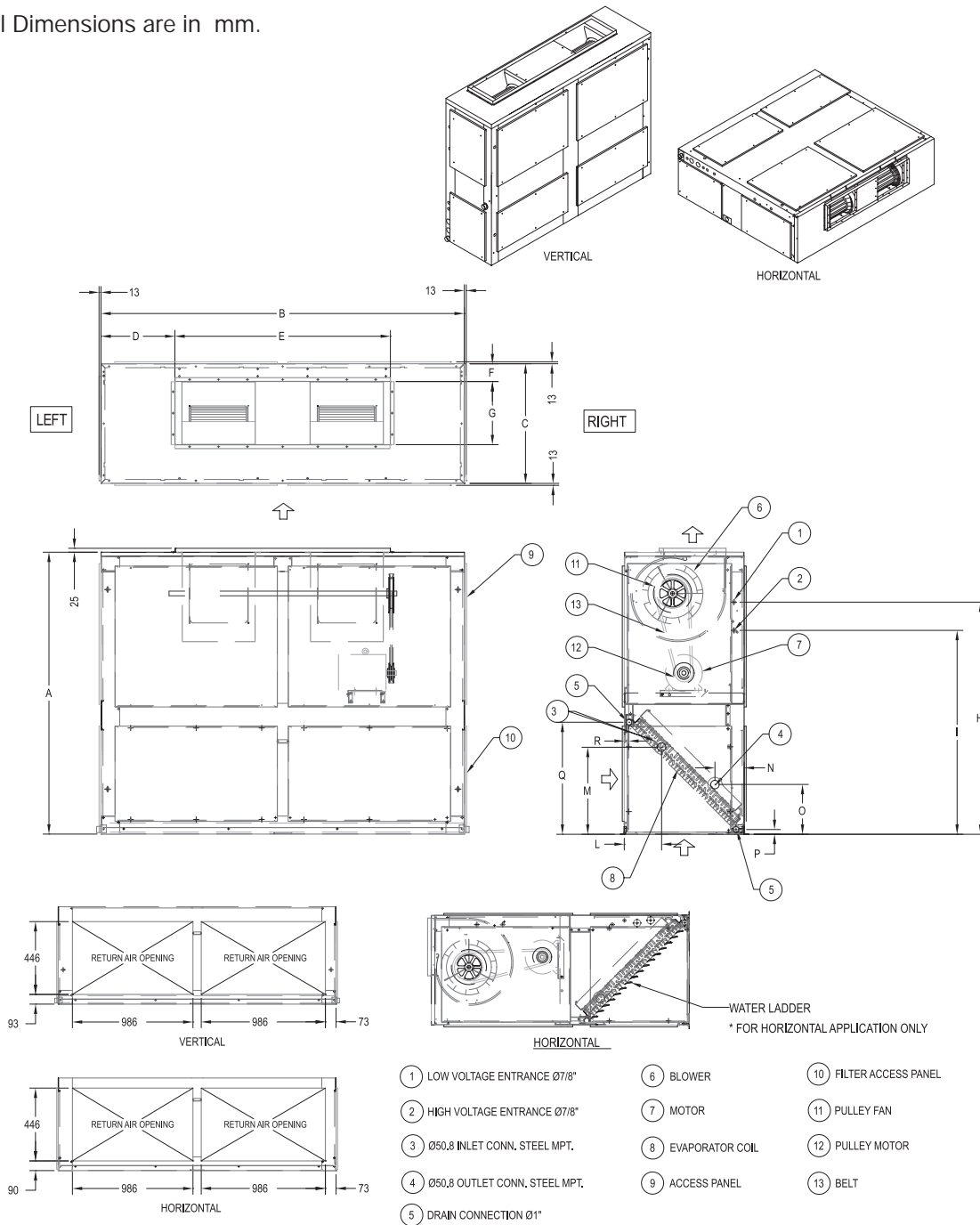
Model No.	Dimensions mm.							
	A	B	C	D	E	F	G	H
BDCB50/60	1751	1613	850	463	686	20	530	1429

Model No.	Dimensions mm.							
	I	J	K	L	M	N	O	P
BDCB50/60	1248	616	267	298	423	30	774	29

Air Handler Unit Dimensional Data

BDCB70-80

Note : All Dimensions are in mm.



Model No.	Dimensions mm.								
	A	B	C	D	E	F	G	H	I
BDCB70/80	1751	2210	702	408	1394	44	410	1429	1248

Model No.	Dimensions mm.								
	J	K	L	M	N	O	P	Q	R
BDCB70/80	-	-	250	493	197	323	30	652	29

Mechanical Specification

Air Handling Units

General

Air handler units shall be completely factory assembled including coil, condensate drain pan, fan motor (s), filters in an insulated casing that can be applied in vertical or horizontal configuration for BDCB 40, BDCB 50, BDCB 60 BDCB 70 and BDCB 80; or dedicated horizontal in the case of BDHA 20, BDHA 25 and BDHA 34. Unit shall be rated and tested in accordance with ARI standard 210.

Unit casing

Units casing shall be constructed of zinc coated, heavy gauge, galvanized steel. Exterior surfaces shall be cleaned, phosphatized and finished with a polyester powder painted and weather resistant baked enamel finish. Casing is completely insulated with fire-retardant, permanent, odorless Polyethylene foam material knock out shall be provided for unit electrical power.

Fans

Fans are double width, double inlet, multiblade centrifugal type. All fans statically and dynamically balanced and tested after being installed on properly sized hollow or solid shafts. Fan shafts do not pass through their first critical speed as unit comes up to rated rpm.

Fan housings constructed with dieformed, streamlined inlets and side sheets. Fan bearings are grease lubricated ball bearings selected for 200,000 hours average life.

Coils

Configured aluminum fin surface shall be mechanically bonded to internally enhanced copper tubing and factory pressure and leak tested at 380 psig. Coil is arranged for drawthrough airflow and shall provide condensate drain pan constructed of PVC plastic for BDCB models, galvanized steel with rubber insulator, polyester powder painted and weather-resistant baked enamel finish drain pan for BDHA models.

Filters

1 inch, aluminium washable filters shall be standard on air handlers. Filters shall be accessible from the side coil access panel. Filter rack can be field converted to 2 inch capability for BDCB models.

Fan Motor

Motor bearings shall be permanently lubricated. oversized motors shall be available as an option for high static application.

ACCESSORIES

Oversized Motors

Field installed oversized motors shall be available for high static pressure applications.

Discharge Plenum

Accessory discharge plenum shall be available for free blow

Return Air grille (For BDCB)

Accessory return air grille shall be provide for free return air.



เทรน(ประเทศไทย)

เลขที่ 1126/2 อาคารวานิช 2 ชั้น 30-31 ถ.เพชรบุรีตัดใหม่
แขวงมีโกะสิน เขตราชเทวี กรุงเทพฯ 10400

โทร. 0-2704-9999

<http://www.tranethailand.com>

บริษัท แอมแอร์ จำกัด

999/1 หมู่ที่ 9 ถ.บางนา-ตราด กม.19 ต.บางโฉบัง
อ.บางพลี จ.สมุทรปราการ 10540

Literature Order Number: CFH-DS-1T

Date: Jul 2008

Supersedes: Dec 2006

Stocking Location: Bangkok, Thailand

Trane has a policy of continuous product and product data improvement and reserves the right to change design and specifications without notice.